

The Miracle News

VOLUME 16 // ISSUE 1



First Step Back Home
PO Box 966
O'Fallon, MO 63366

CONTACTS

Paul Kruse, President
Director Client Services
(636) 466-1365
paul.kruse.1947@gmail.com

Lana Kruse, Secretary
Executive Director
(314) 799-3694
lanakruse@gmail.com

Follow Us on Social Media!

facebook.com/firststepbackhome
twitter.com/1ststepbackhome
youtube.com/@FirstStepBackHome



Visit our Website!



FSBH is Social Service Safety Net *A New Perception and Reminder of FSBH Work*

For years **FSBH** has been known as a “gap-filler”. We’d gotten this designation because of our role in helping people who fall through the cracks of service delivery from organizations that can’t, or won’t, assist in some of the most basic needs - shelter, food, clothing and humane care. Sometimes people have needed help “NOW,” not six months from now, just because they’re HERE now, and they can’t prove a period of residency often required by other agencies. Sometimes they just don’t qualify for government help, but they truly are in need. I would suggest that a better term for the cause of **FSBH** is a **Christian Social Service Safety Net Agency**.

Primarily, **FSBH** is a ministry for the Glory of God, doing His work. We are a model of Jesus’ love and kindness, as He taught us in the Greatest Commandments: **Love God and Love the Poor**. There are 2,000 verses in the Bible concerning helping the homeless and working poor! We encourage others to do the same - to help reduce the number of people suffering from the misery of poverty - specifically the working poor and homeless neighbors in our own communities. Also to promote moral values, growth in faith, holiness, and Christian knowledge. The Bible mandates that all people participate in this cause. **Will you come alongside and help?**

As a **Social Service Safety Net**, **FSBH** is a public charity that provides many services to “catch” the working poor and homeless who have fallen on hard times, leading them to live below the poverty level, and some to homelessness. We are a crucial backup system... a literal “safety net” for the poor.

The goals of most of our homeless and working poor neighbors are to be self-supporting and to live normal, productive lives. **FSBH** assists clients in overcoming their present plight, trusting in Jesus, encouraging and showing them how to work hard to achieve success.



The **FSBH Safety Net** can provide specialized services that other agencies can't. Some examples of how **FSBH** serves are these:

- Christian counseling to give clients hope and Salvation
- Plan for obtaining employment
- Meeting at gas stations for fuel or services
- Paying for vehicles, car repairs and licensing
- Providing temporary motel lodging
- Paying for cell phones and minutes
- Paying for utilities
- Assisting with rent or mortgage payments
- Transporting clients to department stores, DMV, Vital Statistics Office for birth certificates, FSD for benefits, Social Security office for Government benefits, pharmacy for prescription meds, doctors' offices, hospitals and more.
- Providing bikes
- Anything else we can to enhance our clients' lives to move them one or more steps closer, some completely, to success in completing their goals.

We provide one or more of these services daily Monday-Friday all year long. For services we can't provide, we refer to other agencies that can, through the Coordinated Entry 211 system.

Your support of our cause helps us be able to carry on. This spring marks **20 YEARS** of **FSBH** in our region. Through all those years, faithful donors and supporters have undergirded the work set before us. We appreciate all who have helped our cause and actually become a “safety net” for us with your gracious gifts, talents and contributions.

Thank You and God Bless!
- Paul

FSBH Celebrates 20 Years of Serving Fragile Families in the Tri-County Region

This year, 2025 marks the **20th year** of FSBH serving the community. In the beginning, **Paul** just wanted to help a couple guys out of the woods. They were staying behind the **TA Truck Stop** in Foristell, where we were holding **Trucker Church Services** weekly. He sent those first ones to **Salvation Army**, only to learn about the HUGE gap in services in our region for single, homeless men. This scenario spawned what has become **First Step Back Home, Inc.**, a busy homeless ministry for now 20 years!

Over the years, **Paul** has advocated for the needy in practical, tangible, and spiritual ways. He has helped many find jobs, get safe shelter, acquire reliable transportation, connect with local churches, and become stable, contributing members of the communities in which they live.

In the beginning the only “shelter” for homeless men was motel space. Now, 20 years later, awareness has increased, and while the needs are still great, there are a few similar ministries and sheltering spaces in the three-county region of St. Charles, Warren, and Lincoln counties.

Many individuals, businesses, churches, and community organizations have come

alongside to help **FSBH** achieve **success** along the way.

Somehow, God has brought in **nearly \$4 million** to do all this with! Our ministry has grown from one man doing part-time work as a volunteer, to having a full time Client Services Director (**Paul**), a part time Executive Director (**Lana**), a part time caseworker and a part time bookkeeper. Many volunteers help with special events, fundraisers, and donor relations activities.

We wish to thank former and current Board of Directors for their leadership and vision through the years. Currently serving on the Board are:

- **Paul Kruse**, President
- **Lana Kruse**, Secretary
- **Mike Derr**, Treasurer
- **Janet Derr**, Member
- **Dave Bonney**, Member
- **Keith Walton**, Member

Our current Advisors include **Nick Guccione**, **Tricia Byrnes** and **Bill Byrnes**. Each brings unique experiences; skill sets and wisdom to drive FSBH into the next decade!



As we look ahead, some of our goals include:

- Establishing a permanent homeless shelter in St. Charles County for men, women, and children
- Launching a daily community meals program in the Wentzville area
- Raising up advocates for our unhoused neighbors in a region where housing is hard to find

How can YOU get involved?

Pray about it — and let’s talk! Contact any Board Member or Advisor to get started.

Save the Date – 12th Annual Give STL Day Happening Thursday, May 8, 2025



On a single day in May, the St. Louis region comes together to collectively support over one-thousand local nonprofits. On **Give STL Day**, every St. Louisan has the opportunity to join their friends, neighbors, and coworkers by making a donation to the nonprofits that do so much for our community.

Give STL Day was created by the St. Louis Community Foundation in 2014. In its 11-year history, Give STL Day has:

- Raised more than \$34 million for thousands of local nonprofits.
- Ignited the spirit of charitable giving in more than 160,000 donors.
- Generated more than \$11 million in matching funds.
- Awarded more than \$1.9 million in cash prizes to participating organizations.

FSBH has participated in this highly effective fundraiser for the past decade, raising more than \$410,000. We hope readers interested in our cause will consider donating that day once again. This campaign fulfills about 1/3 of our annual budgetary needs.

Right now we have \$19,500 in matching gifts available to match your gift. As little as \$10 can be contributed and get a 100% match!

The direct link for giving to FSBH is: www.givestlday.org/firststepbackhome

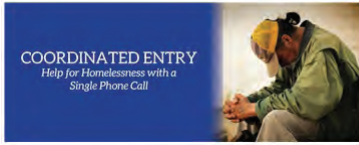
Early Giving will begin on April 23, 2025.

Keep an eye on on our social channels for more information on this year’s event!



Big Picture of Housing Challenges in our Region: 2024 Report

Below is an indepth report from the St. Charles Community Council Executive Director about the BIG PICTURE of homelessness and fragile families from the work they did in 2024. FSBH is just one of many agencies that helps in the region.



Community Leaders:

I always like to start my Coordinated Entry Community Updates with a quote that gives us pause to contemplate. Found this quote from Eric Butterworth, a metaphysical author and spiritual leader about prosperity: *“Prosperity is a way of living and thinking, and not just money and things. Poverty is a way of living and thinking, and not just a lack of money or things.”* Our Tri-County area continues to grow and prosper, appreciate our elected leaders, municipality officials and all those that work to make this a great place to work and live. With great prosperity comes poverty and homelessness, it is a cycle repeated over and over. Elected officials, municipalities, agencies, organizations, churches, and individuals collaborate through the Coordinated Entry process for our neighbors who are unhoused or in a housing crisis.

The Community Update shows positive outputs/outcomes along with how much work we still need to do for some of our neighbors who are falling farther and farther behind. Lots of statistics here so we can continue to make informed and focused decisions across St. Charles, Lincoln and Warren counties.

Coordinated Entry took 8,880 calls transferred from our partners at 211 Helps through the United Way of Greater St. Louis. That does not include direct calls and emails. We highly encourage our neighbors when possible to email our CE Team at centry@communitycouncilstc.org vs. calling so we can schedule times to chat about needs while making referrals to the over 100+ partners across the Tri-County area.

Call to Action:

1. Support our elected officials and municipality leaders as they explore more attainable (work force housing) that would help not only our unhoused neighbors, but also our middle-income families finding it harder and harder to afford rents and/or mortgages.
2. Support agencies who work with our neighbors in a housing crisis, either financially or through volunteer work, as they are the professionals with skills to work with our unhoused neighbors. You can certainly reach out to me and I can connect you to these amazing organizations. Here is a link to our searchable resource directory with over 600 listings: <https://www.communitycouncilstc.org/resources/searchable-resource-directory>
3. Consider financially supporting your Community Council's Coordinated Entry Team as the front door to connecting neighbors in a housing crisis and resources.
4. If you come across an unhoused neighbor or someone in a housing crisis, direct them to centry@communitycouncilstc.org or 211 or (636) 856-5151.
5. Follow the new Continuum of Care (St. Charles, Lincoln and Warren county) Marketing Committee Facebook page for ways to get involved or support activities: <https://www.facebook.com/TriCountyCoC>

Regards,

Todd A. Barnes
Community Council Executive Director
636-978-2277

Of the assessments our Coordinated Entry Team took in 2024, here are demographics:

- 58% are female with 42% male
- 26% have some type of disability
- 15% are employed (some barriers to employment continue to be lack of transportation and child care)
- 60% are Caucasian, 24% Afro-American, 9% multi-racial, 1% Hispanic
- 47% are single parent female households
- 13% are two parent households
- 12% are adult households
- 4% are single parent male households
- 76% of those assessed are in some type of household mostly with children
- 24% are individual households
- 46% of our assessed neighbors have a monthly income between \$0-\$499
- 12% of our assessed neighbors have a monthly income between \$500-\$999
- 10% of our assessed neighbors have a monthly income between \$1,000-\$1,499
- 68% of our assessed neighbors have a monthly income below \$1,500
- HUD data shows across the St. Louis metro area the following monthly apartment rents:
 - One bedroom **\$1,040 per month** (newer construction Tri-County area much higher)
 - Three bedroom **\$1,675 per month** (newer construction Tri-County area much higher)

Realtor.com (July 2024) shows the median home prices:

- St. Charles County - **\$399,990 a +6% increase**
This relates to a **\$2,500-\$3,500** a month mortgage payment
- Warren County - **\$342,500**
This relates to a **\$2,100-\$3,000** a month mortgage payment
- Lincoln County - **\$310,000**
This relates to a **\$1,900-\$2,700** a month mortgage payment

https://prod.caseworthy.com/stcharlescounty_prod-kiosk.kiosk

2024 Client Account Examples of How FSBH Helped Fragile Families

Here are just a few of the heartwrenching stories we encounter every day. In 2024, we were honored to help over 1,400 men, women, and children—600 through crisis intervention and prevention, 600+ at our Christmas Wonderland event, and 200+ at a Thanksgiving dinner in an O’Fallon mobile home park. As we enter our 20th year, we’re filled with hope to reach even more lives.



- **Carie** and her partner **Nancy** are facing incredibly hard times. Nancy is battling Stage 3 kidney disease, Graves’ disease, heart disease, and has limited mobility. Carie, her full-time caregiver, helps with every daily task. Sadly, they lost their home due to Nancy’s declining health. We’ve covered half the cost of a motel stay for three weeks, provided food, and are working to connect them with other support agencies. Carie receives some government assistance as her caretaker, but it’s not enough. We’ll continue to walk alongside them until more help is found
- **Stephanie** got sick and missed work. As a DoorDash driver, her phone is her lifeline—but she couldn’t pay the bill. We covered it, along with fuel, so she could get back on the road.
- **Chris** was homeless and unemployed. We offered to pay for a motel if he committed to 15 job searches a day. He kept his promise, landed a job, and is now paying for his own room—with just a little help from us. This is the model we strive for: first steps toward self-sufficiency.
- **Barry** needed help affording a sober living home. We covered two weeks and his phone bill. He quickly got a job at Hucks and is doing well.
- **Trish**, who lives with a chronic illness, lost her home and had no car. She and her 8-year-old son just needed two nights in a motel. We provided the stay, gave her rides to appointments, and replaced her broken phone so she could stay connected.
- **Jamie** needed assistance with a rent deposit. After verifying her lease, we paid it and also took her to the store for food and gas.



- **James** lost his truck due to missed payments, which cost him his job. We paid to get it out of impound and covered his overdue electric bill so he could get back to work.
- **Andy** and his two-year-old were living in a storage shed after losing housing due to rising costs. We covered two nights in a motel and paid the storage rent for a month. He’s now searching for stable and affordable housing.
- **James** - After losing his job, he needed fuel and a place to stay. We provided both for two nights. He searched for work, got hired, and told us he no longer needed help.
- **Laura**, a single mom of three, couldn’t get to work because of bad tires and car trouble. We bought two tires and paid for repairs—now she’s back at work, providing for her family.

Our Mission:

***"Through the transformative power of God’s Love through the Gospel of Jesus, we offer solutions for poverty and injustice to the homeless and working poor."
Matthew 22: 37-39***

How Do We Help the Homeless and Fragile Families?

Service Summary January – December 2024

The charts below depict the expenses FSBH covered for 244 families last year, representing 352 adults, 163 children, and 18 seniors. The left pie chart indicates services by units, or numbers, not dollars spent. Last year we spent \$86,478 on direct client needs.

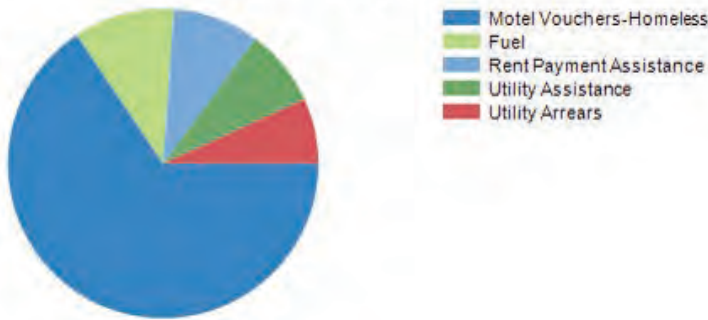


We primarily know about client needs from referrals generated out of the **2-1-1 Coordinated Entry Referral System**.

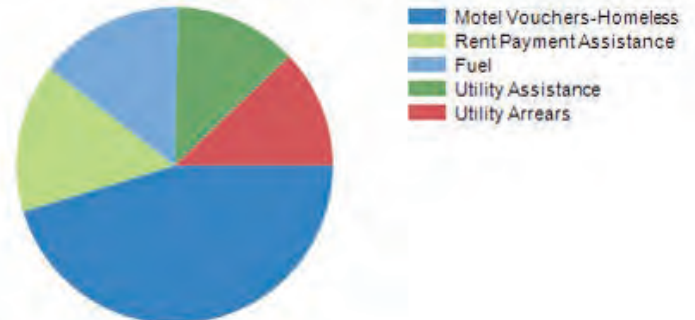
Demographics about the clients served indicate that our “typical” client is a female, between the ages of 25-44, non-hispanic, white, staying in St. Charles County.

If you know of someone needing help, please direct them to dial **2-1-1** on their phone and follow the prompts. If they enter a zip code in our service area, the Coordinated Entry team will triage their situation and send us a referral, if we’re the best agency to support their needs.

Top 5 Services by Units



Top 5 Services by Clients



Service	Entries	Units	Total	Clients	Families	Adults	Children	Seniors
Assistance to purchase vehicle	8	8.00	\$24,699.48	8	8	13	18	1
Car repair	24	24.00	4,517.22	21	21	36	19	2
Cell phone	9	9.00	822.41	9	9	11	5	2
Cell Phone Minutes	15	15.00	936.70	14	14	25	14	1
Clothing	7	7.00	588.51	6	6	7	3	1
Department of Revenue Payment	6	6.00	734.31	3	3	3	3	1
Emergency Home Repair	8	8.00	2,365.47	2	1	1	1	1
Food	20	20.00	1,417.21	16	15	14	5	2
Fuel	43	43.00	1,585.13	33	32	43	14	2
Household Goods	13	13.00	1,220.09	10	10	10	5	2
Insurance	3	3.00	740.02	3	3	4	2	0
Medical Services	1	1.00	90.76	1	1	1	0	0
Medication Assistance	3	3.00	50.22	3	3	4	1	0
Mobile Home Expenses	11	11.00	1,631.88	6	6	9	9	3
Motel Vouchers-Homeless	134	269.00	23,674.36	101	101	139	50	6
Personal hygiene items	1	1.00	8.74	1	1	4	2	0
Rent Payment Assistance	37	37.00	8,075.77	34	34	46	22	1
Rental Arrears Payments	3	3.00	637.00	3	3	7	6	0
Rental Deposit	2	2.00	500.00	2	2	6	2	0
School Supplies	1	1.00	193.63	1	1	1	1	1
Storage	4	4.00	470.85	3	3	3	1	0
Transportation	6	6.00	638.99	5	4	6	1	0
Utility Arrears	28	28.00	5,956.46	27	27	40	29	1
Utility Assistance	33	33.00	4,769.05	28	29	51	32	6
Utility Deposit Assistance	1	1.00	153.83	1	1	1	0	0
Organization Total:	421	556.00	\$86,478.09	244	244	352	163	18

16th Annual Christmas Wonderland

Despite pouring rain and strong winds, God showed up in a big way at our **16th Annual Christmas Wonderland** on December 14, 2024.

Thanks to the incredible support of AMAZING volunteers and donors, we were able to bless over 600 individuals from 120 fragile families to our drive-thru event at **Wentzville United Methodist Church**.

Families were presented with toys, festive holiday snacks, Bibles and prayer at each car, laundry/cleaning supplies, gifts for teens, diapers for babies, and gently used coats.

Each family also received a \$25 gift card. We were BLESSED by so many individuals, businesses and church groups that did so much to share the message of loving your neighbor in so many tangible ways!



2025 Save the Date:
December 20th
@ Wentzville United
Methodist Church

Waypoint Missions Supports FSBH Efforts

On January 12, 2015, both campuses of **Waypoint Church** in St. Charles County highlighted **FSBH** during their annual **Missions Sunday**. Leading up to the event, their Giving Tree campaign raised \$2,500 to support the daily needs of our clients seeking help.

Paul Kruse and Board Member **Keith Walton** represented FSBH at the Harvester campus, while **Lana Kruse** connected with the Wentzville congregation.

We are deeply grateful for **Waypoint Church's** continued generosity and partnership over the years—from financial support to serving meals and leading foodservice efforts at our early Christmas events. Their commitment has been a true blessing to this ministry.



Parishioner with FSBH Board Member Keith Walton at Harvester Campus.



Lana Kruse at the new Waypoint Wentzville Campus.

8th Year for Emergency Weather Response (EWR) Results in Most Activations Ever!

Spring has arrived, but we're still reflecting on a truly extraordinary and rough winter for the **Emergency Weather Response (EWR) Team**. Under the leadership of Project Coordinator **Tiffany Jackson**, the program was activated **25** nights across seven locations in three counties—more than double last year's 11 activations, a 110% increase.

The **EWR** team exists to prevent death from cold exposure—and once again, that mission was fulfilled. In its eighth season, the program provided **488** bed-nights (a 294% increase from last year), served 127 verified households, and even sheltered 47 dogs. Most guests were welcomed at churches and community centers, with a few staying in motels when needed.

This life-saving work wouldn't be possible without the dedication of our partner churches, community organizations, and volunteers. Thank you for being the hands and feet of compassion when it mattered most. **FSBH is thankful** to be a part of this essential program for our unhoused neighbors. In the very beginning **FSBH** was one of the original funding agencies to get this program off the ground.



Thrivent Action Team Assembles Survival Food Boxes

A **Thrivent Action Team** created by **FSBH** ministry friend **Christian Rowe** and his family assembled 14, 3-day survival food boxes for clients staying in the local motels.

This was part of a large family's holiday gifting efforts – to bless others in need at this time of the year. The theme of the **Thrivent Action Teams** is to "*Live Generously*" and this team did just that as they poured love and care into creating these essential meal supplies.

Many clients staying in the local motels have been thankful and blessed by these provisions!



Mission Financial Blesses FSBH Clients

On a sunny day in early December, about 160 clients of **Mission Financial** in St. Peters gathered for a festive holiday celebration—with generous hearts. Many brought donations for our **16th Annual Christmas Wonderland**, including toys, laundry and cleaning supplies, and gift cards to bless the 120 fragile families we served.

A heartfelt thank you to **Janssen and Robyn Longenecker** and their amazing team for organizing this joyful and generous event. Your continued support is such a blessing to **FSBH** and all of the the families in the community that we assist.



Ministry Meals Calendar

For now the meals program is on hold, pending identification of a suitable inside space for it to happen in the Wentzville area. If you know of any possible locations, please contact Lana Kruse, Executive Director at 314-799-3694 or lanakruse@gmail.com.

In the meantime, one way YOU can help is to organize a small group to put together some **Survival Food Boxes**. Click the link for suggested options to include.

We distribute these boxes daily to clients being served, if they are in need of food. We can provide you a tax receipt for your donations if you need it. Just keep receipts and submit them to the Inventory Coordinator.

Our Inventory Coordinator will be happy to pick up your collection and she'll arrange for us to get them when we have clients in need. Please call or text Sue Miller at (636) 734-0855.



Cookies for Coats

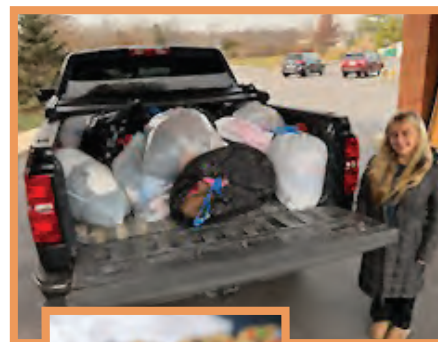
Here's one successful, creative fundraiser that warmed MANY hearts and bodies this past winter season. Our ministry friend **Cate Fromm**, a senior at **North Point High School** in Wentzville, had been conducting donation drives for us for several years. In the past she had focused on hotel-sized toiletries, collected from her cheerleading team friends when they'd



travel for tournaments. However, after COVID, many of the hotels stopped offering individual sized items, so she had been unable to collect enough to make an impactful donation.

So, this past fall, she decided to try something different. **Cookies for Coats** began, and she offered freshly baked cookies to anyone from her school who would bring in a gently used or new coat. She said it was a lot of fun. And we know it was a huge success, because she and her dad, **Jeff Fromm**, dropped off bags and bags of the coats, totaling 125 to our **16th Annual Christmas Wonderland** event last December. We were able to distribute every one of those men's, women's and kid's coats to the 120 families that attended our event.

Thank you, Cate, for always thinking of creative, fun ways to help others. You're a delight to know and work with! We're sure your college days ahead will bring new ways to find successful ventures!



**Thanks,
Cate!**

Mizzou Health System Helps with Toiletry Drive

Inspired by the “**Cookies for Coats**” donation drive organized by **Cate Fromm** last fall, her mother's work group, the **Thompson Center for Autism and Neurodevelopment**, at Mizzou in Columbia, joined in to help **FSBH** as well!

A toiletry drive was promoted within the work group over the holidays and in early February, **Cherie Fromm** brought over two tubs FULL of essential toiletries, including toothbrushes, toothpaste, soaps, combs, etc. Cherie said,

“I feel so lucky that my coworkers supported your organization, which is near and dear to my heart!”

Once again, many of our daily clients are being blessed by these essential provisions. They are so thankful that others remember them when these items are made available.



Cherie Fromm and
Lana Kruse

Stand-up Freezer Supplied to NECAC

North East Community Action Corporation (NECAC) assists clients of St. Charles County with their energy bills, Section 8 vouchers, and receiving WIC benefits. We created a food pantry to assist clients with their food insecurities. When clients come into the office to get assistance, they can also receive groceries through the food pantry. We also give referrals to outside food pantries for clients who need more than what we can provide.

Recently **NECAC** has partnered with local restaurants for frozen food donations, and that is where the need came for more freezer space. We asked **FSBH** for funding for a stand-up freezer to assist with the overwhelming amount of frozen food items we now receive, and they supplied one just the right size for our limited space.

Last year, **FSBH** supplied totes and bins for additional storage items that **NECAC** needed. We continue to be grateful for the partnership we have with **FSBH**, along with many other community partners that continue to help us thrive in assisting residents of St. Charles County.



Carrie Dina, St. Charles County
Service Coordinator



Recent Donor Acknowledgements April 2025 Newsletter

We are deeply grateful to the many businesses, churches, community groups, and individuals who have supported FSBH with generous financial gifts this past quarter—some given in honor or memory of loved ones.

Your kindness and thoughtfulness mean the world to us. Thank you for choosing to bless our mission whenever the opportunity arises. Your support truly makes a difference.

- \$7,000 – Cuivre River Electric Cooperative Operation Round Up
- \$2,500 – Waypoint Church, Harvester (See article on page 7)
- \$1,800 – Grace Community Chapel, St. Peters
- \$1,232 – AbbVie Corporate – Match from employee gift
- \$1,200 – Element Church, Wentzville
- \$1,083 – Mary Martha Thrift Shop, Wentzville
- \$1,000 – St. John UCC, St. Charles
- \$ 800 – Wentzville United Methodist Men’s Group
- \$ 658 – Marathon Petroleum – Match from employee gift
- \$ 600 – Chapel of the Lake, Lake St. Louis
- \$ 600 – Mission Financial – St. Peters
- \$ 500 – United Methodist Church of the Shepherd, St. Charles
- \$ 500 – Ladies Auxiliary Knights of Columbus Council 823
- \$ 450 – Warrenton Christian Church
- \$ 450 – Church of God Faith Fellowship, Grubville
- \$ 300 – Black & Associates, Troy
- \$ 225 – Timothy Halls, Moneta Group, in honor of Ken Kilen
- \$ 179 – Thrivent Choice Dollars allocations from Dennis & Donna Hall and Tina Koncki
- \$ 150 – Michael Hannemann, in memory of Bill Marler
- \$ 100 – Lake St. Louis Ambassadors Group
- \$ 50 – ACE Home Inspections, O’Fallon
- \$ 50 – MasterCard – Match from employee gift
- \$ 15 – AT&T Corporate – Match from employee gift



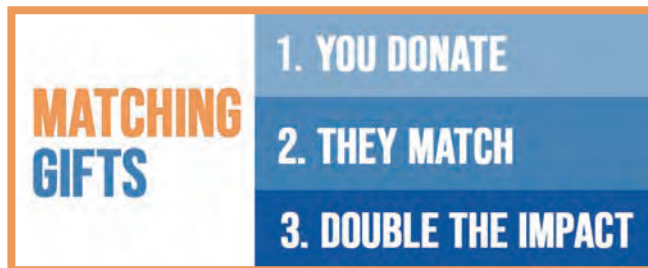
Ways to Support First Step Back Home

We're so grateful for the many generous hearts who choose to support our mission. Your tax-deductible donation not only sustains our work—it brings real hope to those we serve. As a 501(c)(3) public charity, we provide receipts for all gifts to use for your tax documentation. Here are some meaningful ways you can give:

Corporate Matching Gift Programs

Many companies match employee donations or volunteer hours with financial gifts! Some known supporters include:

- Industrial Ally
- AT&T
- Wells Fargo
- Bayer
- Boeing
- Marathon Petroleum
- MasterCard
- Pfizer
- VMWare
- Thrivent Financial Services



For example, Boeing offers a \$250 donation when an employee volunteers 25 hours with us! If your employer offers a similar program, we're happy to complete any required paperwork.

By Check

You can mail a check payable to **First Step Back Home, Inc.** to:
Paul Kruse
PO Box 966
O'Fallon, MO 63366



Online Giving

Visit our website: www.firststepbackhome.net and click "Donate" to give securely via credit card through PayPal. Note: A small fee is deducted by PayPal.



Direct PayPal Link

You can also give directly using:
www.paypal.com/paypalme/firststepbackhome

Thrivent Members

Thrivent members can apply for two "Action Team" grants per year, receiving \$250 in seed money to support charitable causes like ours.



Learn more at: www.thrivent.com/actionteam



Give STL Day

The direct link for giving is: www.givestlday.org/firststepbackhome
Early Giving begins on April 23, 2025.

